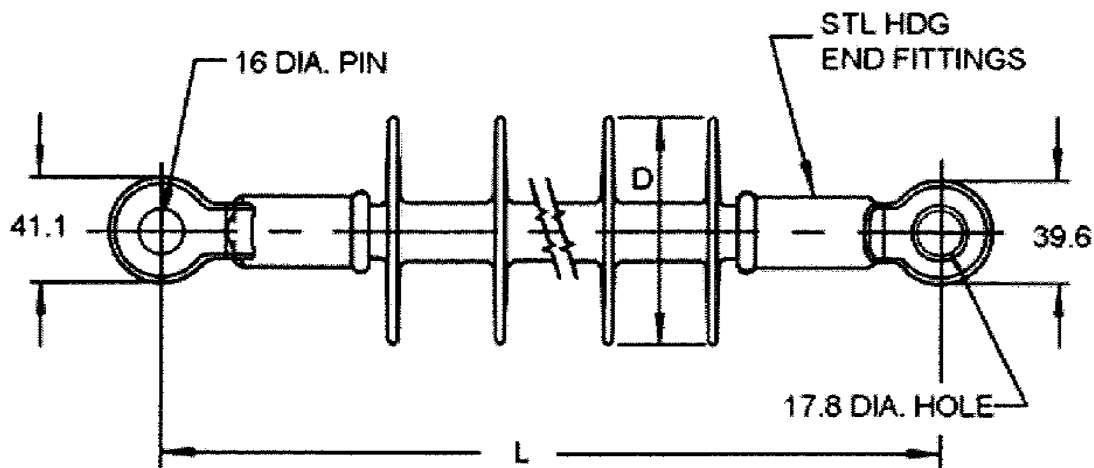


COMPOSITE LONGE ROD SUSPENSION INSULATOR

PDI 16mm Diameter Rod Deadend Insulators



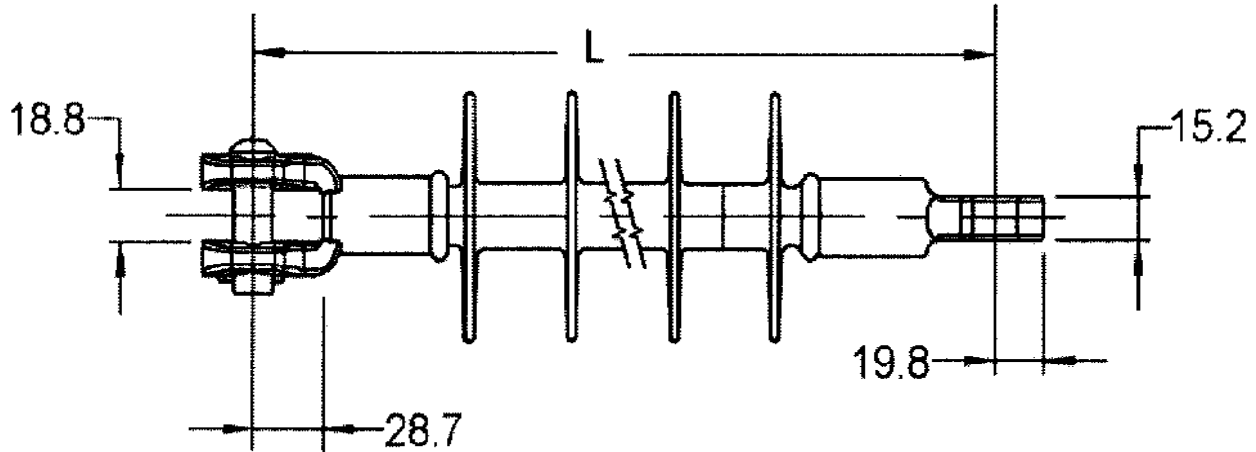
Mechanical Characteristics

| Item No. | Cat.No. | No. of Sheds | Length (mm) | Diameter (mm) | Net Wt. (kg) | Torsion (N-m) | SML (kN) | RTL (kN) | Proof (kN) |
|----------|-------------|--------------|-------------|---------------|--------------|---------------|----------|----------|------------|
| 1 | 02010503-01 | 4 | 318 | 92 | 0.95 | 47 | 70 | 35 | 44.5 |
| 2 | 02010503-02 | 4 | 318 | 92 | 0.95 | 55 | 70 | 35 | 44.5 |
| 3 | 02010703-01 | 8 | 445 | 76 | 1.1 | 47 | 70 | 35 | 44.5 |
| 4 | 02010703-02 | 8 | 445 | 76 | 1.1 | 55 | 70 | 35 | 44.5 |
| 5 | 02010603-01 | 8 | 475 | 89 | 1.3 | 47 | 70 | 35 | 44.5 |
| 6 | 02010603-02 | 8 | 475 | 89 | 1.3 | 55 | 70 | 35 | 44.5 |
| 7 | 02010803 | 8 | 635 | 76 | 1.5 | 47 | 70 | 35 | 44.5 |

NOTE:PDI Type insulators are intended for applications which are within 45° of horizontal-to allow proper shed drainage.

COMPOSITE LONG ROD SUSPENSION INSULATOR

PDI 16mm Diameter Rod Dead end Insulators

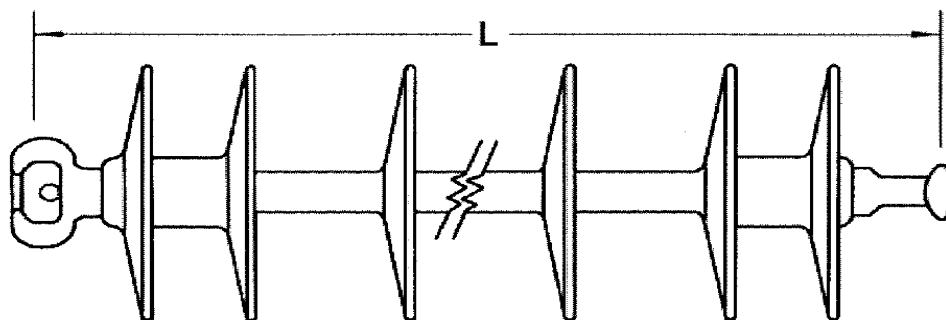


Electrical Characteristics

| Item No. | Cat.No. | Leakage Distance (mm) | Dry Arc Distance (mm) | Flashover (kV) | | Critical Flashover(kV) | | RIV | | Power Arc KA cycles | Volt*/ Class |
|----------|-------------|-----------------------|-----------------------|----------------|-----|------------------------|------|---------|--------------|---------------------|--------------|
| | | | | Dry | Wet | Pos. | Neg. | Test-kV | Max- μ V | | |
| 1 | 02010503-01 | 406 | 203 | 110 | 75 | 140 | 160 | 15 | 10 | 150 | 15 |
| 2 | 02010503-02 | 406 | 203 | 110 | 75 | 140 | 160 | 15 | 10 | 150 | D3-15 |
| 3 | 02010703-01 | 660 | 311 | 130 | 110 | 200 | 225 | 20 | 10 | 150 | 25 |
| 4 | 02010703-02 | 660 | 311 | 130 | 110 | 200 | 225 | 20 | 10 | 150 | DS-28 |
| 5 | 02010603-01 | 787 | 356 | 150 | 130 | 260 | 280 | 30 | 10 | 150 | 25&35 |
| 6 | 02010603-02 | 787 | 356 | 150 | 130 | 260 | 280 | 30 | 10 | 150 | DS-35 |
| 7 | 02010803 | 838 | 508 | 200 | 160 | 325 | 360 | 30 | 10 | 150 | 35 |

COMPOSITE LONG ROD SUSPENSION INSULATORS

VLS 16mm Diameter Rod Suspension Insulators



Mechanical Characteristics

| Item No. | Cat. No. | No. of sheds | Length (mm) | Diameter (mm) | Net Wt. (kg) | SML (kN) | RTL (kN) | Proof (kN) |
|----------|----------|--------------|-------------|---------------|--------------|----------|----------|------------|
| 1 | 02010103 | 6 | 438 | 150 | 1.8 | 70 | 35 | 44.5 |
| 2 | 02010203 | 8 | 584 | 150 | 2.3 | 70 | 35 | 44.5 |
| 3 | 02010303 | 10 | 730 | 150 | 2.8 | 70 | 35 | 44.5 |
| 4 | 02010403 | 12 | 876 | 150 | 3.2 | 70 | 35 | 44.5 |

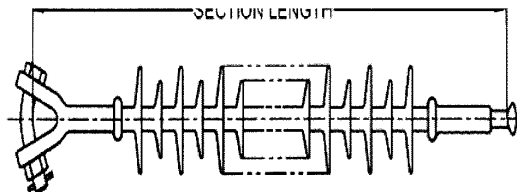
Electrical Characteristics

| Item No. | Cat.No. | Leakage Distance (mm) | Dry Arc distance (mm) | Flashover (kV) | | Critical Flashover (kV) | | RIV | | Power Arc KA Cycles | Volt*/ Class |
|----------|----------|-----------------------|-----------------------|----------------|-----|-------------------------|------|---------|--------------|---------------------|--------------|
| | | | | Dry | Wet | Pos. | Neg. | Test-kV | Max- μ V | | |
| 1 | 02010103 | 991 | 457 | 190 | 140 | 320 | 330 | 32 | 10 | 150 | 35/46 |
| 2 | 02010203 | 1372 | 602 | 255 | 190 | 420 | 435 | 48 | 10 | 150 | 46/69 |
| 3 | 02010303 | 1753 | 749 | 315 | 245 | 500 | 510 | 48 | 10 | 150 | 69 |
| 4 | 02010403 | 2134 | 894 | 370 | 305 | 610 | 580 | 48 | 10 | 150 | 69 |

NOTE:VLS insulators are available with ANSI and IEC ball/socket end fittings and also with clevis/tongue End fittings.

COMPOSITE LONE ROD SUSPENSION INSULATOR

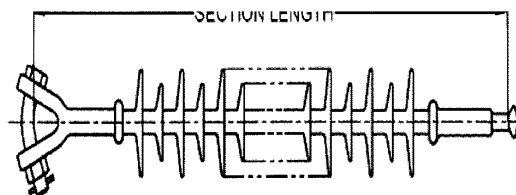
Mechanical Ratings
 SML=25,000lbs.(111kN)
 RTL=12,500lbs.(56kN)



| Item No. | Cat. No. | Usual System Volt. (kV) | Section Length (mm) | Leakage Distance (mm) | Arcing Distance (mm) | Low frequency Flashover | | Critical Impulse Flashover | | Approx. Weight (kg) |
|----------|-------------|-------------------------|---------------------|-----------------------|----------------------|-------------------------|--------|----------------------------|---------|---------------------|
| | | | | | | Dry-kV | Wet-kV | Pos.-kV | Neg.-kV | |
| 1 | 02011004-01 | 69 | 881 | 1549 | 627 | 245 | 240 | 410 | 390 | 2.2 |
| 2 | 02011004-02 | 69 | 915 | 1816 | 688 | 310 | 275 | 460 | 490 | 3.7 |
| 3 | 02011004-03 | 69 | 1034 | 1930 | 780 | 310 | 295 | 505 | 490 | 4.0 |
| 4 | 02011004-04 | 69 | 1125 | 2401 | 892 | 385 | 340 | 585 | 620 | 4.3 |
| 5 | 02011104-01 | 115 | 1189 | 2337 | 935 | 370 | 350 | 605 | 595 | 4.2 |
| 6 | 02011104-02 | 115 | 1215 | 2673 | 988 | 420 | 370 | 645 | 680 | 4.6 |
| 7 | 02011104-03 | 115 | 1380 | 2692 | 1155 | 450 | 385 | 735 | 750 | 4.8 |
| 8 | 02011204-01 | 138 | 1346 | 2718 | 1090 | 430 | 405 | 700 | 695 | 3.2 |
| 9 | 02011204-02 | 138 | 1455 | 3359 | 1228 | 510 | 450 | 790 | 835 | 5.3 |
| 10 | 02011204-03 | 138 | 1535 | 3632 | 1325 | 515 | 435 | 840 | 860 | 5.7 |
| 11 | 02011204-04 | 138 | 1635 | 3874 | 1408 | 575 | 510 | 900 | 950 | 5.8 |
| 12 | 02011304-01 | 161 | 1501 | 3099 | 1247 | 490 | 455 | 795 | 795 | 5.2 |
| 13 | 02011304-02 | 161 | 1651 | 3505 | 1435 | 550 | 465 | 900 | 910 | 5.4 |
| 14 | 02011304-03 | 161 | 1785 | 4288 | 1552 | 625 | 560 | 985 | 1045 | 6.2 |
| 15 | 02011304-04 | 161 | 1815 | 3556 | 1595 | 610 | 555 | 985 | 1010 | 5.6 |
| 16 | 02011304-05 | 161 | 1935 | 4731 | 1709 | 685 | 610 | 1080 | 1145 | 6.6 |
| 17 | 02011304-06 | 161 | 2055 | 5074 | 1829 | 730 | 650 | 1155 | 1220 | 7.0 |
| 18 | 02011304-07 | 161 | 2105 | 5080 | 1885 | 730 | 650 | 1155 | 1120 | 7.3 |
| 19 | 02011404-01 | 230 | 1966 | 4267 | 1712 | 655 | 605 | 1080 | 1090 | 5.7 |
| 20 | 02011404-02 | 230 | 2055 | 5074 | 1829 | 730 | 650 | 1155 | 1220 | 7.0 |
| 21 | 02011404-03 | 230 | 2121 | 4674 | 1867 | 710 | 655 | 1170 | 1185 | 6.8 |
| 22 | 02011404-04 | 230 | 2205 | 5488 | 1973 | 780 | 700 | 1245 | 1315 | 7.4 |
| 23 | 02011404-05 | 230 | 2355 | 5932 | 2129 | 840 | 750 | 1340 | 1415 | 7.9 |
| 24 | 02011404-06 | 230 | 2431 | 5436 | 2174 | 810 | 750 | 1350 | 1370 | 7.3 |
| 25 | 02011404-07 | 230 | 2505 | 6346 | 2273 | 890 | 795 | 1425 | 1505 | 8.3 |
| 26 | 02011404-08 | 230 | 2642 | 6731 | 2420 | 935 | 835 | 1500 | 1580 | 8.6 |
| 27 | 02011504-01 | 345 | 2586 | 5817 | 2329 | 855 | 790 | 1440 | 1465 | 8.0 |
| 28 | 02011504-02 | 345 | 2625 | 6689 | 2393 | 935 | 835 | 1500 | 1580 | 8.6 |
| 29 | 02011504-03 | 345 | 2743 | 6223 | 2487 | 970 | 870 | 1560 | 1645 | 8.0 |
| 30 | 02011504-04 | 345 | 2896 | 6604 | 2639 | 1010 | 905 | 1640 | 1730 | 7.8 |
| 31 | 02011504-05 | 345 | 3015 | 7818 | 2790 | 1050 | 940 | 1740 | 1835 | 9.8 |
| 32 | 02011504-06 | 345 | 3205 | 7366 | 2951 | 1115 | 1000 | 1900 | 2000 | 8.3 |

NOTE: 1.All section lengths are based on Y-Ball end fitting.
 2.Electrical values are per ANSI standards and without corona rings.
 3.Tolerances and tests are as per ANSI C29.11

COMPOSITE LONG ROD SUSPENSION INSULATORS



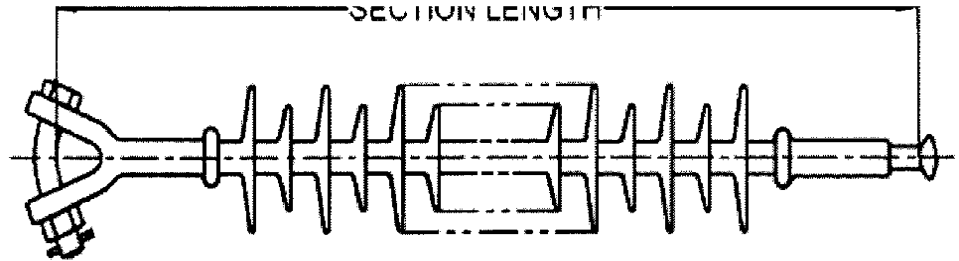
Mechanical Ratings
 SML=30,000lbs.(111kN)
 RTL=12,500lbs.(67kN)

| Item No. | Cat. No. | Usual System Volt. (kV) | Section Length (mm) | Leakage Distance (mm) | Arcing Distance (mm) | Low frequency Flashover | | Critical Impulse Flashover | | Approx. Weight (kg) |
|----------|-------------|-------------------------|---------------------|-----------------------|----------------------|-------------------------|--------|----------------------------|---------|---------------------|
| | | | | | | Dry-kV | Wet-kV | Pos.-kV | Neg.-kV | |
| 1 | 02011005-01 | 69 | 881 | 1549 | 627 | 245 | 240 | 410 | 390 | 2.2 |
| 2 | 02011005-02 | 69 | 915 | 1816 | 688 | 310 | 275 | 460 | 490 | 3.7 |
| 3 | 02011005-03 | 69 | 1034 | 1930 | 780 | 310 | 295 | 505 | 490 | 4.0 |
| 4 | 02011005-04 | 69 | 1125 | 2401 | 892 | 385 | 340 | 585 | 620 | 4.3 |
| 5 | 02011105-01 | 115 | 1189 | 2337 | 935 | 370 | 350 | 605 | 595 | 4.2 |
| 6 | 02011105-02 | 115 | 1215 | 2673 | 988 | 420 | 370 | 645 | 680 | 4.6 |
| 7 | 02011105-03 | 115 | 1380 | 2692 | 1155 | 450 | 385 | 735 | 750 | 4.8 |
| 8 | 02011205-01 | 138 | 1346 | 2718 | 1090 | 430 | 405 | 700 | 695 | 3.2 |
| 9 | 02011205-02 | 138 | 1455 | 3359 | 1228 | 510 | 450 | 790 | 835 | 5.3 |
| 10 | 02011205-03 | 138 | 1535 | 3632 | 1325 | 515 | 435 | 840 | 860 | 5.7 |
| 11 | 02011205-04 | 138 | 1635 | 3874 | 1408 | 575 | 510 | 900 | 950 | 5.8 |
| 12 | 02011305-01 | 161 | 1501 | 3099 | 1247 | 490 | 455 | 795 | 795 | 5.2 |
| 13 | 02011305-02 | 161 | 1651 | 3505 | 1435 | 550 | 465 | 900 | 910 | 5.4 |
| 14 | 02011305-03 | 161 | 1785 | 4288 | 1552 | 625 | 560 | 985 | 1045 | 6.2 |
| 15 | 02011305-04 | 161 | 1815 | 3556 | 1595 | 610 | 555 | 985 | 1010 | 5.6 |
| 16 | 02011305-05 | 161 | 1935 | 4731 | 1709 | 685 | 610 | 1080 | 1145 | 6.6 |
| 17 | 02011305-06 | 161 | 2055 | 5074 | 1829 | 730 | 650 | 1155 | 1220 | 7.0 |
| 18 | 02011305-07 | 161 | 2105 | 5080 | 1885 | 730 | 650 | 1155 | 1120 | 7.3 |
| 19 | 02011405-01 | 230 | 1966 | 4267 | 1712 | 655 | 605 | 1080 | 1090 | 5.7 |
| 20 | 02011405-02 | 230 | 2055 | 5074 | 1829 | 730 | 650 | 1155 | 1220 | 7.0 |
| 21 | 02011405-03 | 230 | 2121 | 4674 | 1867 | 710 | 655 | 1170 | 1185 | 6.8 |
| 22 | 02011405-04 | 230 | 2205 | 5488 | 1973 | 780 | 700 | 1245 | 1315 | 7.4 |
| 23 | 02011405-05 | 230 | 2355 | 5932 | 2129 | 840 | 750 | 1340 | 1415 | 7.9 |
| 24 | 02011405-06 | 230 | 2431 | 5436 | 2174 | 810 | 750 | 1350 | 1370 | 7.3 |
| 25 | 02011405-07 | 230 | 2505 | 6346 | 2273 | 890 | 795 | 1425 | 1505 | 8.3 |
| 26 | 02011405-08 | 230 | 2642 | 6731 | 2420 | 935 | 835 | 1500 | 1580 | 8.6 |
| 27 | 02011505-01 | 345 | 2586 | 5817 | 2329 | 855 | 790 | 1440 | 1465 | 8.0 |
| 28 | 02011505-02 | 345 | 2625 | 6689 | 2393 | 935 | 835 | 1500 | 1580 | 8.6 |
| 29 | 02011505-03 | 345 | 2743 | 6223 | 2487 | 970 | 870 | 1560 | 1645 | 8.0 |
| 30 | 02011505-04 | 345 | 2896 | 6604 | 2639 | 1010 | 905 | 1640 | 1730 | 7.8 |
| 31 | 02011505-05 | 345 | 3015 | 7818 | 2790 | 1050 | 940 | 1740 | 1835 | 9.8 |
| 32 | 02011505-06 | 345 | 3205 | 7366 | 2951 | 1115 | 1000 | 1900 | 2000 | 8.3 |

NOTE: 1.All section lengths are based on Y-Ball end fitting.
 2.Electrical values are per ANSI standards and without corona rings.
 3.Tolerances and tests are as per ANSI C29.11

COMPOSITE LONG ROD SUSPENSION INSULATOR

Mechanical Ratings
SML=30,000lbs.(133kN)
RTL=15,000lbs.(67kN)

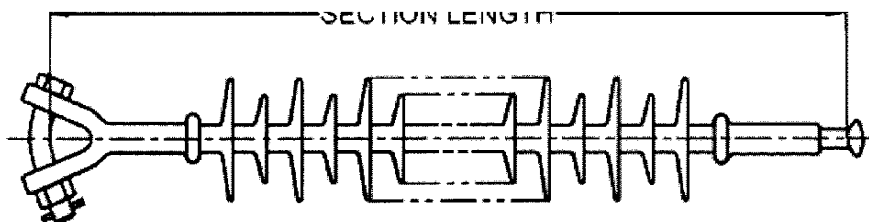


| Item No. | Cat. No. | Usual System Volt. (kV) | Section Length (mm) | Leakage Distance (mm) | Arcing Distance (mm) | Low frequency Flashover | | Critical Impulse Flashover | | Approx. Weight (kg) |
|----------|-------------|-------------------------|---------------------|-----------------------|----------------------|-------------------------|--------|----------------------------|---------|---------------------|
| | | | | | | Dry-kV | Wet-kV | Pos.-kV | Neg.-kV | |
| 1 | 02011505-01 | 345 | 3330 | 8575 | 3054 | 1115 | 1000 | 1905 | 2005 | 10.8 |
| 2 | 02011505-02 | 345 | 3581 | 9440 | 3350 | 1180 | 1055 | 2065 | 2170 | 12.0 |
| 3 | 02011505-09 | 345 | 3600 | 9362 | 3330 | 1185 | 1060 | 2070 | 2180 | 11.6 |
| 4 | 02011605-03 | 500 | 3840 | 10048 | 3570 | 1235 | 1110 | 2220 | 2335 | 12.3 |
| 5 | 02011605-02 | 500 | 4260 | 11248 | 3991 | 1325 | 1190 | 2475 | 2605 | 13.5 |
| 6 | 02011605-03 | 500 | 4445 | 13185 | 4205 | 1360 | 1205 | 2610 | 2715 | 14.5 |
| 7 | 02011605-04 | 500 | 4565 | 12106 | 4291 | 1390 | 1245 | 2660 | 2795 | 14.4 |
| 8 | 02011605-05 | 500 | 4674 | 13175 | 4440 | 1410 | 1275 | 2770 | 2885 | 14.7 |
| 9 | 02011605-06 | 500 | 4925 | 13135 | 4652 | 1455 | 1305 | 2875 | 3025 | 15.5 |

NOTE: 1.All section lengths are based on Y-Ball end fitting.
2.Electrical values are per ANSI standards and without corona rings.
3.Tolerances and tests are as per ANSI C29.11

COMPOSITE LONG ROD SUSPENSION INSULATOR

Mechanical Ratings
SML=50,000lbs.(222kN)
RTL=25,000lbs.(111kN)



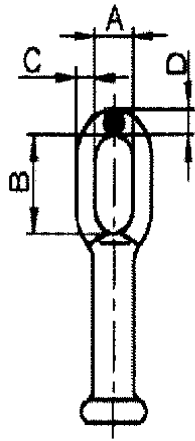
| Item No. | Cat. No. | Usual System Volt. (kV) | Section Length (mm) | Leakage Distance (mm) | Arcing Distance (mm) | Low frequency Flashover | | Critical Impulse Flashover | | Approx. Weight (kg) |
|----------|-------------|-------------------------|---------------------|-----------------------|----------------------|-------------------------|--------|----------------------------|---------|---------------------|
| | | | | | | Dry-kV | Wet-kV | Pos.-kV | Neg.-kV | |
| 1 | 02011306-01 | 161 | 1574 | 3073 | 1245 | 490 | 455 | 795 | 795 | 8.0 |
| 2 | 02011306-02 | 161 | 1727 | 3886 | 1385 | 530 | 450 | 870 | 880 | 9.2 |
| 3 | 02011306-03 | 161 | 1882 | 3835 | 1554 | 600 | 555 | 985 | 990 | 9.0 |
| 4 | 02011306-04 | 161 | 2032 | 4775 | 1675 | 660 | 550 | 1060 | 1100 | 10.0 |
| 5 | 02011306-05 | 161 | 2159 | 5080 | 1985 | 760 | 650 | 1250 | 1270 | 10.7 |
| 6 | 02011406-01 | 230 | 2347 | 5004 | 2019 | 760 | 700 | 1260 | 1280 | 11.5 |
| 7 | 02011406-02 | 230 | 2489 | 5969 | 2135 | 840 | 760 | 1340 | 1360 | 11.5 |
| 8 | 02011406-03 | 230 | 2502 | 5385 | 2174 | 810 | 745 | 1350 | 1370 | 11.0 |
| 9 | 02011406-04 | 230 | 2659 | 5791 | 2329 | 855 | 790 | 1440 | 1465 | 11.5 |
| 10 | 02011506-01 | 345 | 2967 | 6553 | 2639 | 945 | 875 | 1615 | 1650 | 12.2 |
| 11 | 02011506-02 | 345 | 3124 | 7849 | 2780 | 990 | 915 | 1705 | 1740 | 14.4 |
| 12 | 02011506-03 | 345 | 3279 | 7315 | 2951 | 1030 | 955 | 1790 | 1830 | 14.8 |
| 13 | 02011506-04 | 345 | 3378 | 8585 | 3040 | 1075 | 1005 | 1880 | 1915 | 15.6 |
| 14 | 02011506-05 | 345 | 3586 | 8103 | 3259 | 1110 | 1035 | 1960 | 2005 | 15.0 |
| 15 | 02011606-01 | 500 | 3886 | 8382 | 3535 | 1180 | 1105 | 2125 | 2175 | 15.2 |
| 16 | 02011606-02 | 500 | 4209 | 9627 | 3879 | 1245 | 1175 | 2285 | 2345 | 16.5 |
| 17 | 02011606-03 | 500 | 4445 | 13106 | 4110 | 1275 | 1200 | 2365 | 2420 | 22.2 |
| 18 | 02011606-04 | 500 | 4519 | 10414 | 4191 | 1305 | 1240 | 2445 | 2510 | 18.4 |
| 19 | 02011606-05 | 500 | 4676 | 13106 | 4340 | 1330 | 1270 | 2520 | 2590 | 21.9 |

NOTE: 1.All section lengths are based on Y-Ball end fitting.
2.Electrical values are per ANSI standards and without corona rings.
3.Tolerances and tests are as per ANSI C29.11

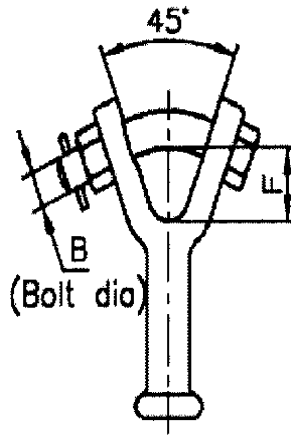
COMPOSITE LONG ROD SUSPENSION INSULATOR

COMPOSITE LONG ROD SUSPENSION INSULATOR

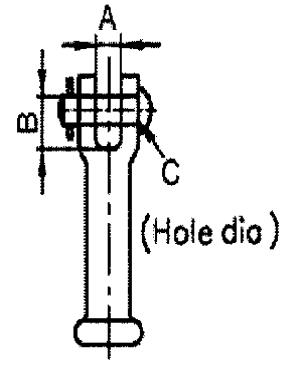
38mm Diameter Rod Line Post



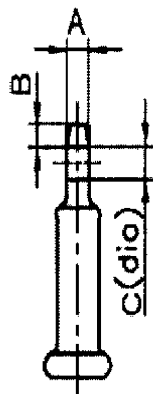
OVAL EYE(E)



Y-CLEVIS(Y)



CLEVIS(C)



TONGUE(T)



SOCKET(S)

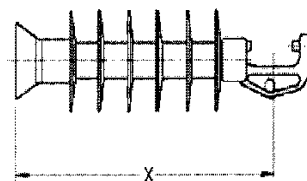
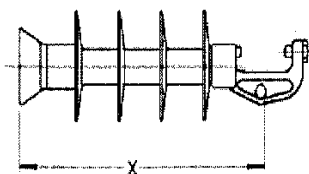
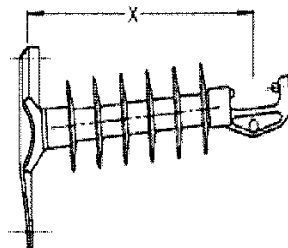
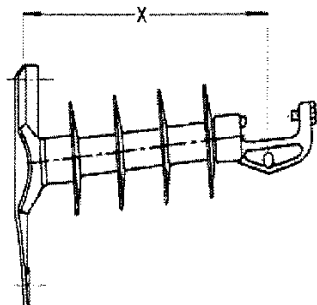


BALL(J,K)

| SML LBS (kN) | Oval Eye | | | | Y-Clevis | | Clevis | | | Tongue | | | Socket/Ball | |
|--------------------|--------------|-------------|--------------|--------------|--------------|---------------|--------------|--------------|----------------|----------------|----------------|----------------|-------------|---------------|
| | A | B | C | D | F Min. | B | A | B Min | C | A | B | C | Type | ANSI Class |
| 25,000 (111) | 1.02 (26) | 2.0 (51) | 0.63 (16) | 0.63 (16) | 1.54 (39) | 0.75 (19) | 0.75 (19) | 0.98 (25) | 0.69 (17.5) | 0.53 (13.5) | 0.52 (13.3) | 0.69 (17.5) | J | 52-5 |
| 30,000 (133) | 1.02 (26) | 2.0 (51) | 0.87 (22) | 0.87 (22) | 1.57 (40) | 0.875 (22) | 0.75 (19) | 0.98 (25) | 0.69 (17.5) | 0.53 (13.5) | 0.52 (13.3) | 0.69 (17.5) | J | 52-5 |
| 50,000 (222) | 1.02 (26) | 2.0 (51) | 0.87 (22) | 0.87 (22) | 1.57 (40) | 0.875 (22) | 1.06 (27) | 1.26 (32) | 0.94 (24) | 0.90 (22.8) | 0.59 (14.9) | 0.94 (24) | K | 52-11 |

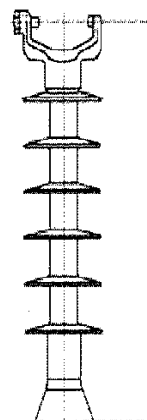
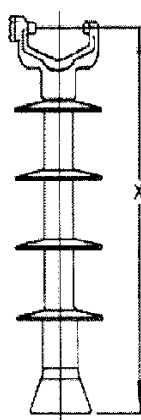
COMPOSITE LINE POST INSULATORS

38mm Diameter Rod Line Post



Horizontal Style 35kV

Horizontal Style 46kV



Design Tension Strength:11kN

| Item No. | Cat No. | Post Style | Usual System Voltage (kV) | "X" Length (mm) | Dry Arc distance (mm) | Leakage Distance (mm) | Low Freq. Flashover (kV) | | Critical Flashover (kV) | | SCL (kN) | RCL (kN) | Net Weight (kg) |
|----------|-------------|------------|---------------------------|-----------------|-----------------------|-----------------------|--------------------------|-----|-------------------------|------|----------|----------|-----------------|
| | | | | | | | Dry | Wet | Pos. | Neg. | | | |
| 1 | 02010801-01 | Horiz. | 35 | 427 | 299 | 591 | 135 | 100 | 195 | 210 | 10 | 5 | 4.2 |
| 2 | 02010801-02 | Horiz. | 35 | 450 | 299 | 591 | 145 | 110 | 205 | 215 | 10 | 5 | 3.4 |
| 3 | 02010801-03 | Ver. | 35 | 450 | 299 | 591 | 145 | 110 | 205 | 215 | 10 | 5 | 3.4 |
| 4 | 02010901-01 | Horiz. | 46 | 470 | 356 | 778 | 150 | 115 | 225 | 265 | 10 | 5 | 4.4 |
| 5 | 02010901-02 | Horiz. | 46 | 488 | 356 | 778 | 160 | 125 | 235 | 270 | 10 | 5 | 3.7 |
| 6 | 02010901-03 | Vert. | 46 | 473 | 356 | 778 | 160 | 125 | 235 | 270 | 10 | 5 | 3.7 |

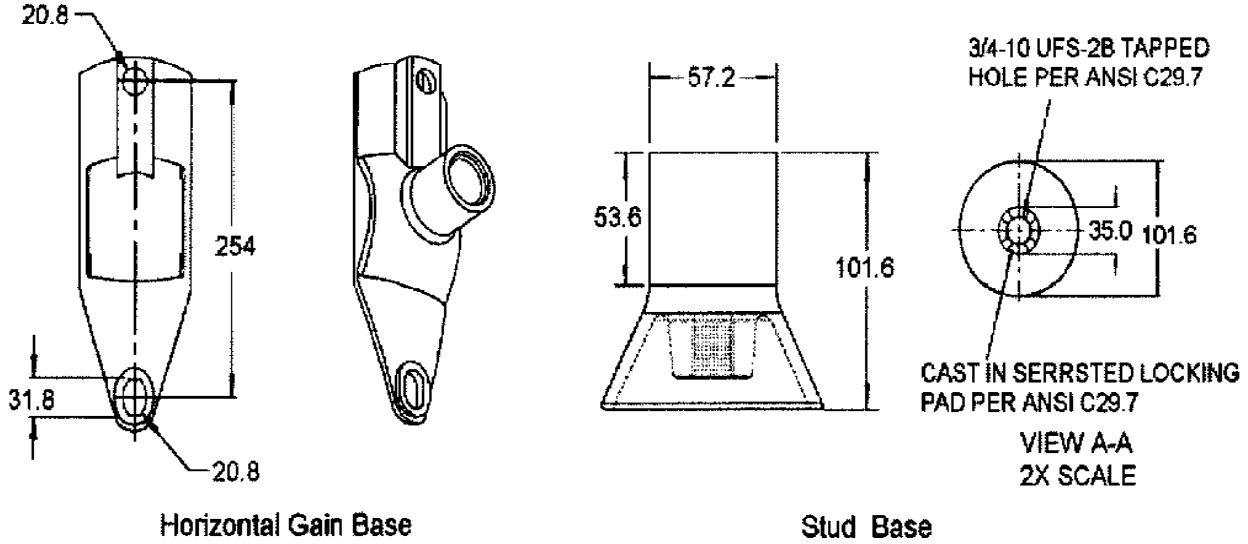
NOTE:1.SCL is the ultimate cantilever strength rating.

2.RCL is the maximum continuous cantilever load at which the post should be applied.

ANSI Standard Type

COMPOSITE LINE POST INSULATORS

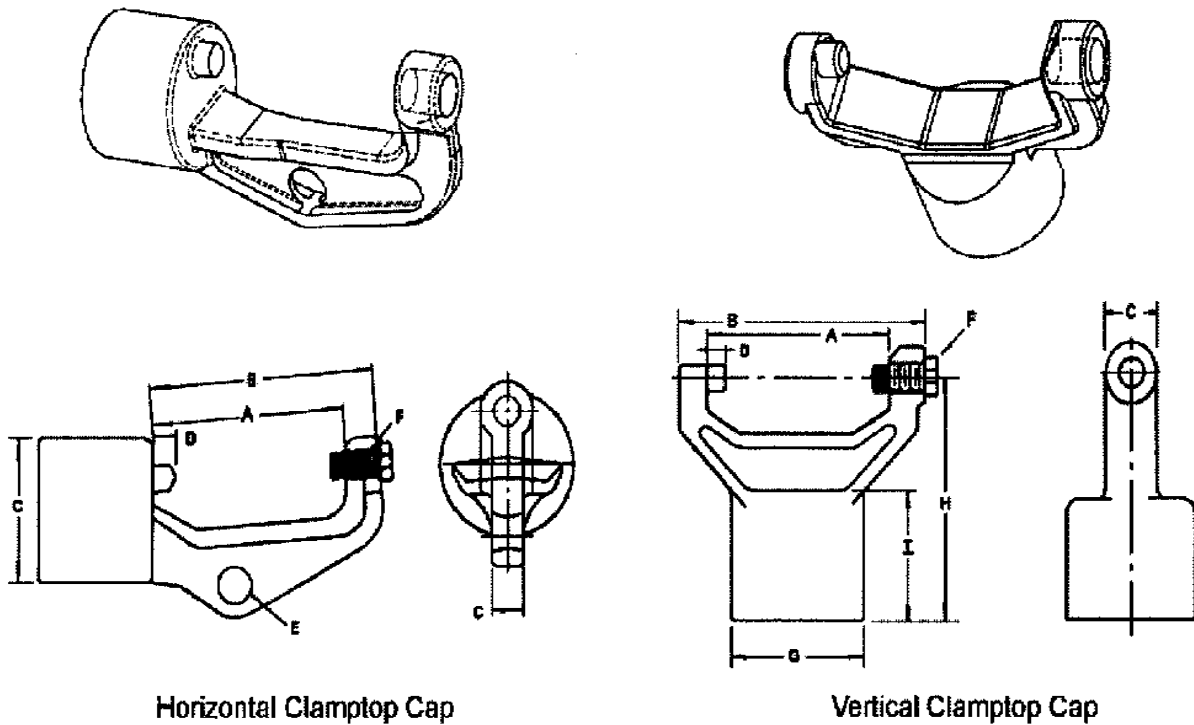
Post Base Fittings Dimensions(in mm)



Horizontal Gain Base

Stud Base

Post Line Fittings Dimensions(in mm)



Horizontal Clamptop Cap

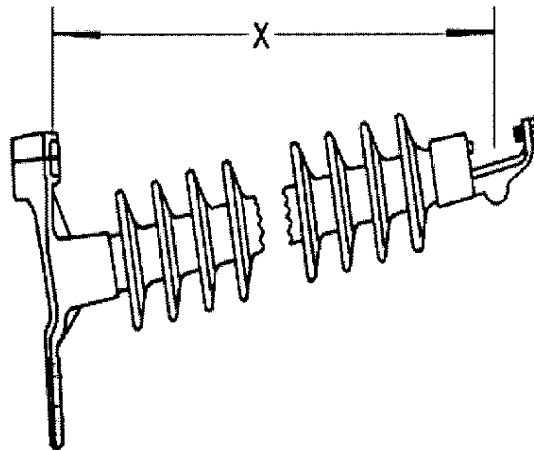
Vertical Clamptop Cap

Line Post Line Fittings Dimensions(in mm)

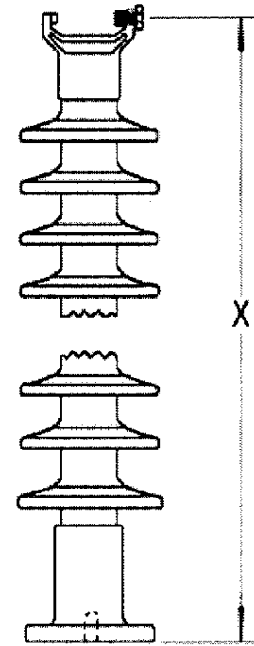
| Type | A | B | C | D | E | F | G | H | I |
|----------------|-------|-------|------|-----|------|--------------|------|------|------|
| H.Clamptop Cap | 101.6 | 120.6 | 15.7 | 9.6 | 17.5 | 5/8-11UFS-2B | 57.2 | - | - |
| V.Clamptop Cap | 101.6 | 136.6 | 28.4 | 9.6 | - | 5/8-11UFS-2B | 57.2 | 81.0 | 35.0 |

COMPOSITE LINE POST INSULATORS

44mm Diameter Rod Line Post



Horizontal Style



Vertical Style

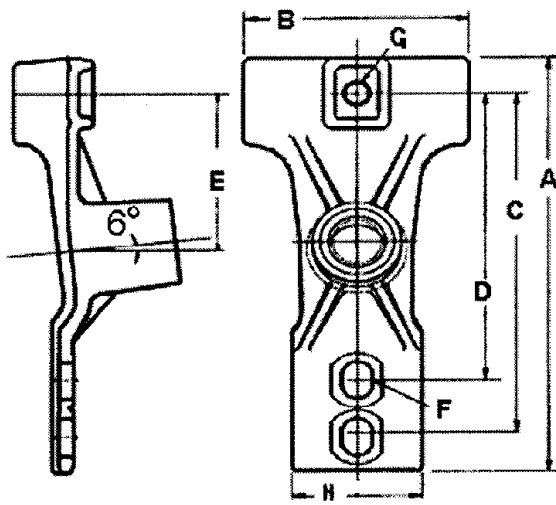
Maximum Design
Clamptop:11kN
Blade:44.5kN

| Cat.No. | Post Style | Usual System Voltage (kV) | "X" Diameter (mm) | Dry Arc Distance (mm) | Leakage Distance (mm) | Low Freq. Flashover (kV) | | Critical Flashover (kV) | | SCL (kN) | RCL' (kN) | Net Weight (kg) |
|-------------|------------|---------------------------|-------------------|-----------------------|-----------------------|--------------------------|-----|-------------------------|------|----------|-----------|-----------------|
| | | | | | | Dry | Wet | Pos. | Neg. | | | |
| 02011001-01 | Horiz. | 69 | 654 | 533 | 1295 | 210 | 190 | 350 | 425 | 10.9 | 5.4 | 12.4 |
| 02011001-02 | Horiz. | 69 | 641 | 533 | 1295 | 210 | 190 | 350 | 425 | 10.9 | 5.4 | 12.2 |
| 02011001-03 | Horiz. | 69 | 641 | 533 | 1295 | 210 | 190 | 350 | 425 | 10.9 | 5.4 | 12.4 |
| 02011001-04 | Horiz. | 69 | 692 | 533 | 1295 | 210 | 190 | 350 | 425 | 10.9 | 5.4 | 8.3 |
| 02011001-05 | Horiz. | 69 | 692 | 533 | 1295 | 210 | 190 | 350 | 425 | 10.9 | 5.4 | 8.3 |
| 02011001-06 | Horiz. | 69 | 679 | 533 | 1295 | 210 | 190 | 350 | 425 | 10.9 | 5.4 | 8.1 |
| 02011001-07 | Horiz. | 69 | 679 | 533 | 1295 | 210 | 190 | 350 | 425 | 10.9 | 5.4 | 8.1 |
| 02011001-08 | Horiz. | 69 | 679 | 533 | 1295 | 210 | 190 | 350 | 425 | 10.9 | 5.4 | 8.3 |
| 02011001-09 | Horiz. | 69 | 679 | 533 | 1295 | 210 | 190 | 350 | 425 | 10.9 | 5.4 | 8.3 |
| 02011001-10 | Vert. | 69 | 699 | 533 | 1295 | 210 | 170 | 350 | 425 | 10.9 | 5.4 | 9.1 |
| 02011001-11 | Vert. | 69 | 699 | 533 | 1295 | 210 | 170 | 350 | 425 | 10.9 | 5.4 | 9.1 |

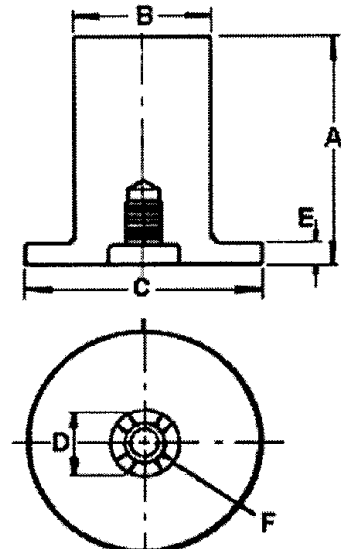
Note:1.SCL is the ultimate cantilever strength rating.

2.RCL is the maximum continuous cantilever load at which the post should be applied.

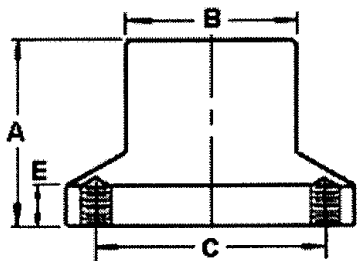
COMPOSITE LINE POST INSULATORS



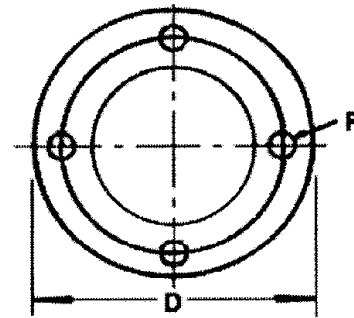
Horizontal Gain Base



Stud Base



76mm Bolt Circle

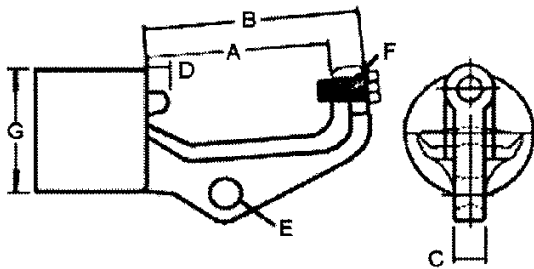


127mm Bolt Circle

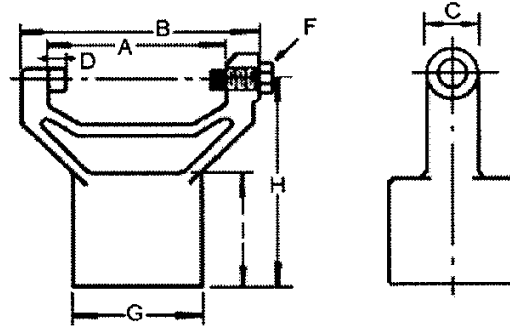
Line Post Base Fittings Dimensions(in mm)

| Type | A | B | C | D | E | F | G | H |
|----------------|-------|-------|-------|-------|-------|-------------------------------|------|-------|
| H.Gain Base | 368.3 | 177.8 | 304.8 | 254 | 171.4 | 32X22 | 22.4 | 101.6 |
| Stud Base | 130.0 | 73.0 | 127 | 38.1 | 12.7 | 3/4-10 UFS-2B or 7/8-9 UFS-2B | - | - |
| 3" Bolt Circle | 69.8 | 73.0 | 76.2 | 108.0 | 15.2 | 1/2-13 UFS-2B | - | - |
| 5" Bolt Circle | 82.6 | 73.0 | 127 | 158.8 | 11.9 | 5/8-11 UFS-2B pr 18 Dia. | - | - |

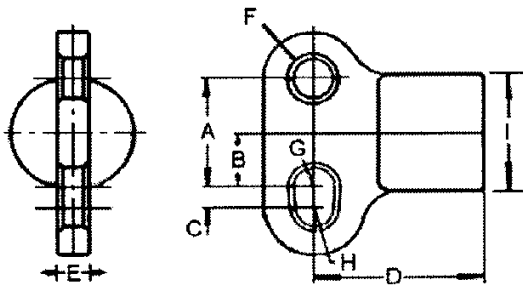
COMPOSITE LINE POST INSULATORS



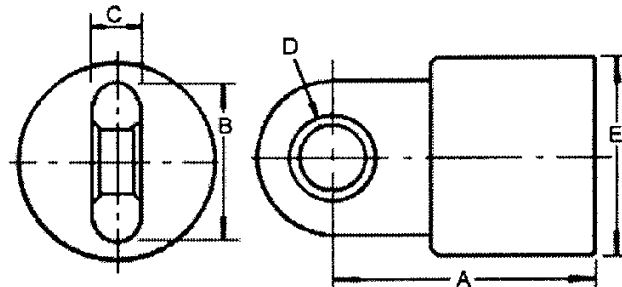
Horizontal Clamptop Cap



Vertical Clamptop Cap



Two Hole Blade



One Hole Blade

Line Post Line Fittings Dimensions(in mm)

| Type | A | B | C | D | E | F | G | H | I |
|-----------------|-------|-------|------|-------|------|---------------|-------|-------|------|
| H. Clamptop Cap | 101.6 | 120.6 | 15.7 | 9.6 | 17.5 | 5/8-11 UFS-2B | 73.0 | - | - |
| v. Clamptop Cap | 101.6 | 136.6 | 28.4 | 9.6 | - | 5/8-11 UFS-2B | 73.0 | 122.2 | 66.8 |
| Two Hole Blade | 69.8 | 35.0 | 12.7 | 101.6 | 19.0 | 25.4 Dia. | 12.7R | 11.2R | 73.0 |
| One Hole Blade | 101.6 | 57.2 | 19.0 | 25.4 | 73.0 | - | - | - | - |

COMPOSITE LINE POST INSULATORS

Clamptop Clamps

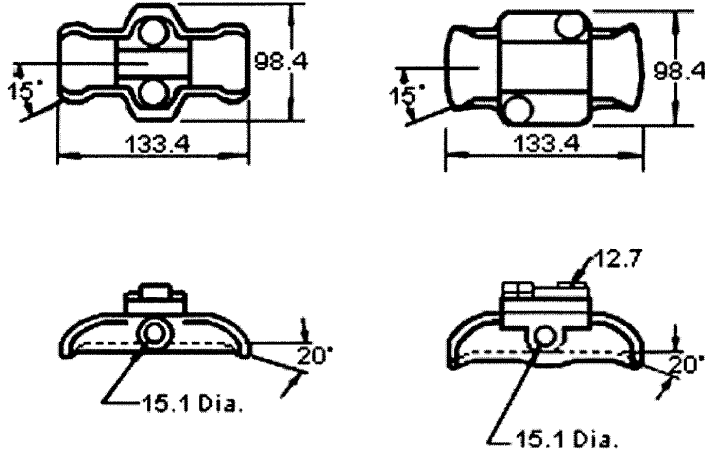


Figure 1

Figure 2

| Fig.No. | Clamping Range(mm) | Ultimate Body Strength(kg) |
|---------|--------------------|----------------------------|
| 1 | 6.3-14.4 | 1273 |
| 1 | 12.7-26.9 | 1273 |
| 1 | 25.4-38.1 | 1273 |
| 2 | 38.1-50.8 | 1273 |

Mounting Studs

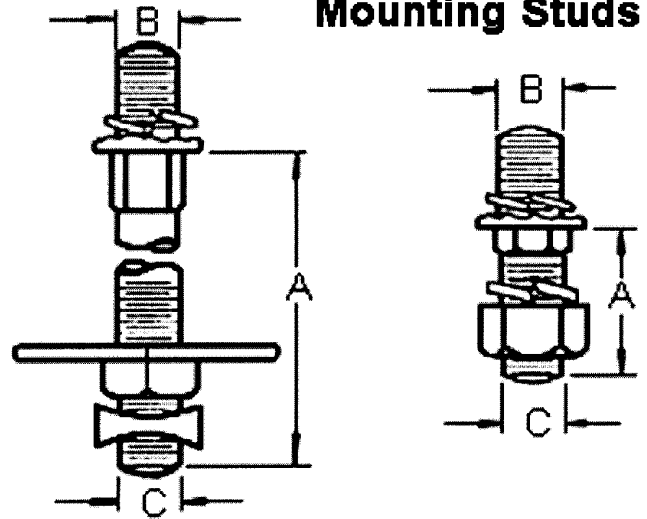
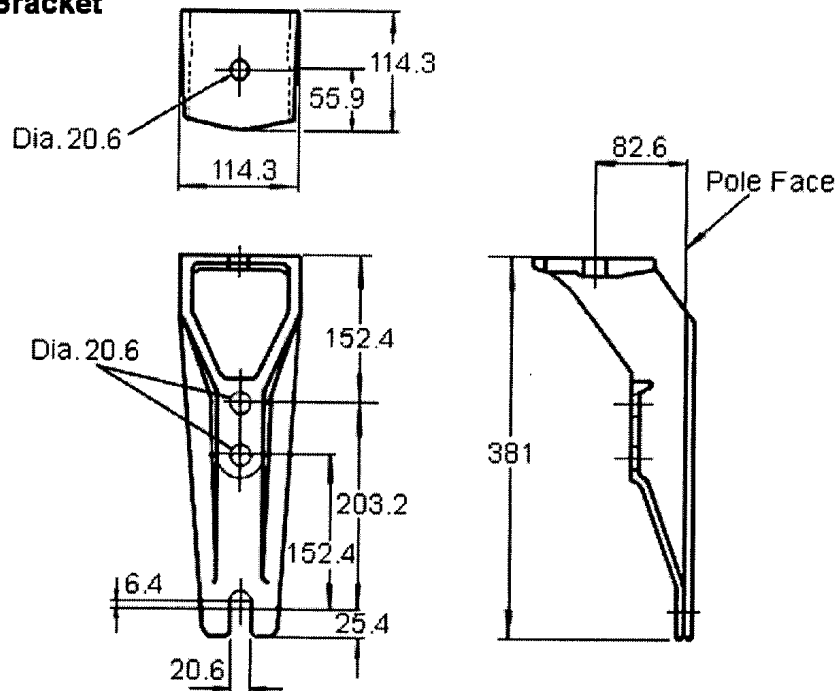


Figure 1

Figure 2

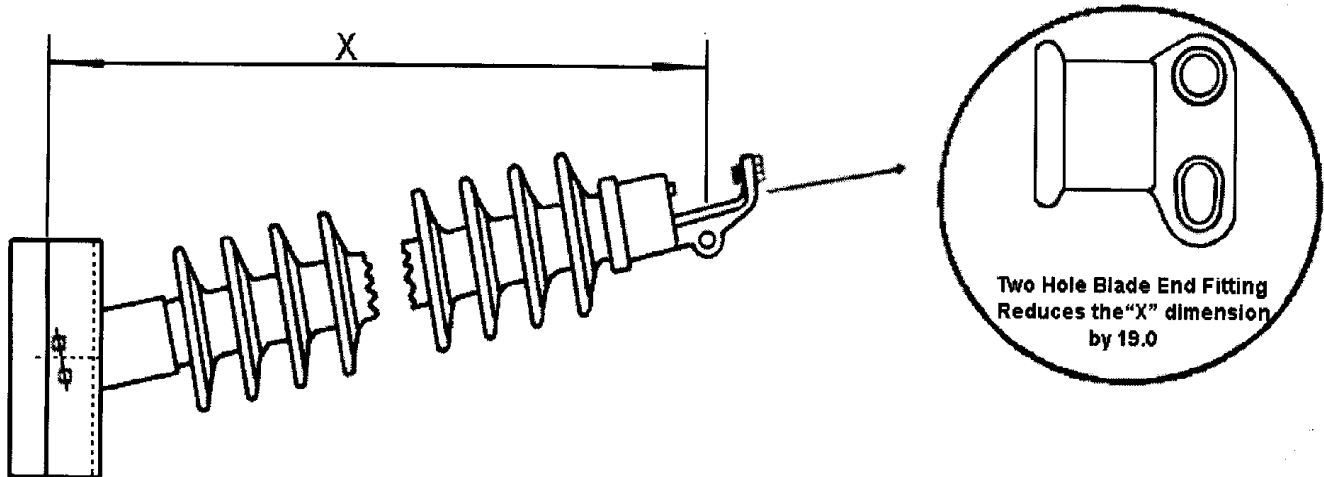
| Fig.No. | A(mm) | B(mm) | C(mm) |
|---------|-------|-------|-------|
| 1 | 177.8 | 19.0 | 15.9 |
| 1 | 177.8 | 19.0 | 19.0 |
| 1 | 203.2 | 22.2 | 22.2 |
| 2 | 44.4 | 19.0 | 15.9 |
| 2 | 44.4 | 19.0 | 19.0 |
| 2 | 50.8 | 22.2 | 22.2 |

Mounting Bracket



COMPOSITE LINE POST INSULATORS

63.5mm Rod Diameter Horizontal Line Posts



Clamptop:

Maximum Design Tension=2,500lb(11.1kN)

Two-Hole Blade:

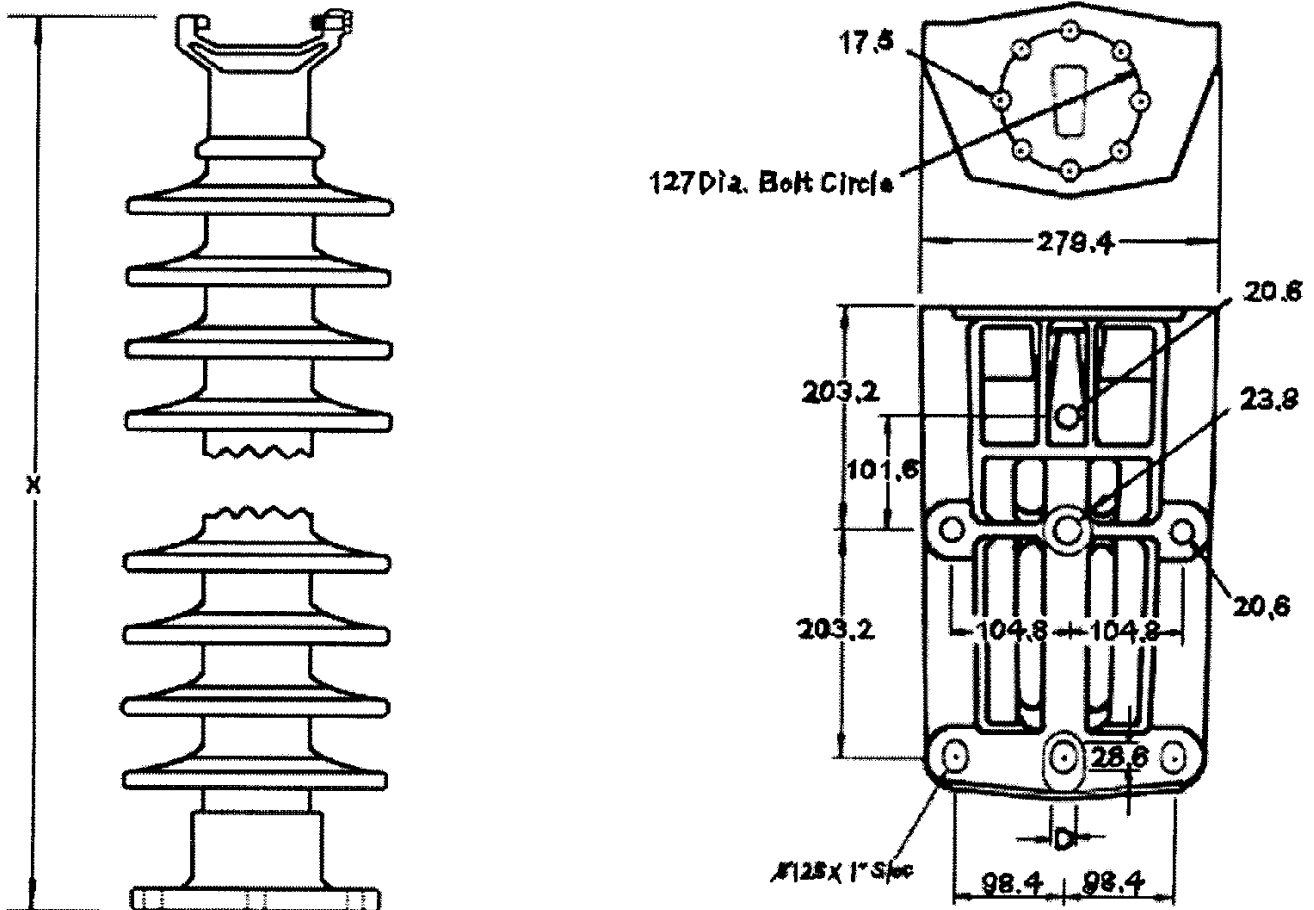
Maximum Design Tension=7,500lb(33.4kN)

| Catalog# With Gain Base& Clamptop end Fittings | Usual System Voltage (kV) | "X" Length (mm) | No. Of Sheds | Dry Arc Distance (mm) | Leakage Distance (mm) | Low Freq. Flashover (kV) | | Critical Flashover (kV) | | RCL (kN) | Net Weight (kg) |
|--|------------------------------------|-----------------------|--------------------|-----------------------------|-----------------------------|--------------------------------|-----|-------------------------------|------|-------------|-----------------------|
| | | | | | | Dry | Wet | Pos. | Neg. | | |
| 02011002H-01 | 69 | 851 | 8 | 584 | 1372 | 215 | 195 | 340 | 455 | 11.1 | 21.3 |
| 02011002H-02 | 69 | 980 | 10 | 711 | 1727 | 270 | 245 | 420 | 535 | 11.1 | 22.7 |
| 02011002H-03 | 69 | 1115 | 12 | 838 | 2083 | 325 | 295 | 505 | 620 | 9.5 | 24.5 |

NOTE:RCL is the maximum continuous load at which the post should be applied.

COMPOSITE LINE POST INSULATORS

63.5 mm Rod Diameter Vertical Line Posts



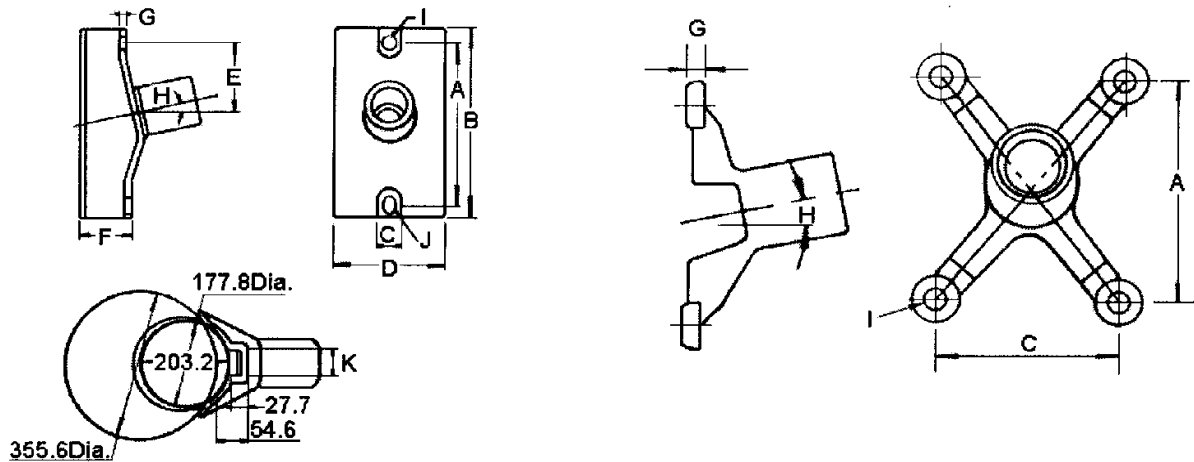
Maximum Design Tension
2,500lb(11.1kN)

| Catalog# With 5" Bolt Circle&Vert. Clamptop | Usual System Voltage (kV) | "X" Length (mm) | No. Of Sheds | Dry Arc Distance (mm) | Leakage Distance (mm) | Low Freq. Flashover (kV) | | Critical Flashover (kV) | | RCL (kN) | Net Weighth (kg) |
|--|------------------------------------|-----------------------|--------------------|-----------------------------|-----------------------------|--------------------------------|-----|-------------------------------|------|-------------|------------------------|
| | | | | | | Dry | Wet | Pos. | Neg. | | |
| 02011002V-01 | 69 | 780 | 8 | 584 | 1371 | 215 | 195 | 340 | 455 | 11.1 | 12.3 |
| 02011002V-02 | 69 | 912 | 10 | 711 | 1727 | 270 | 245 | 420 | 535 | 11.0 | 13.6 |

NOTE:RCL is the maximum cantilever continuous load at which the post should be applied.

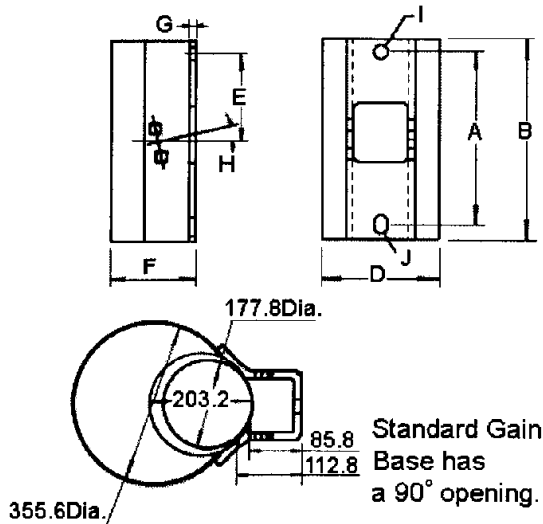
COMPOSITE LINE POST INSULATORS

63.5mm Rod Diameter Base Fittings

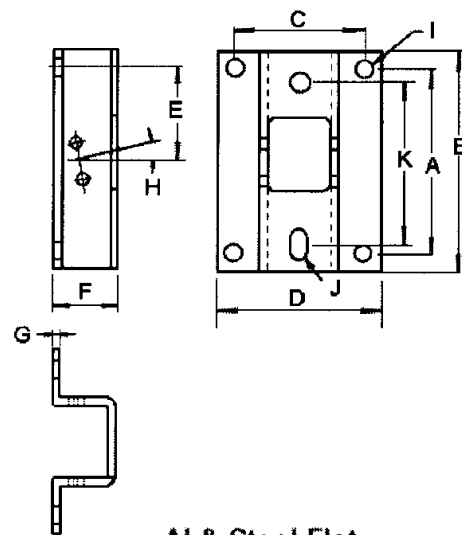


Unitary Gain

Unitary Flat



AI & Steel Gain



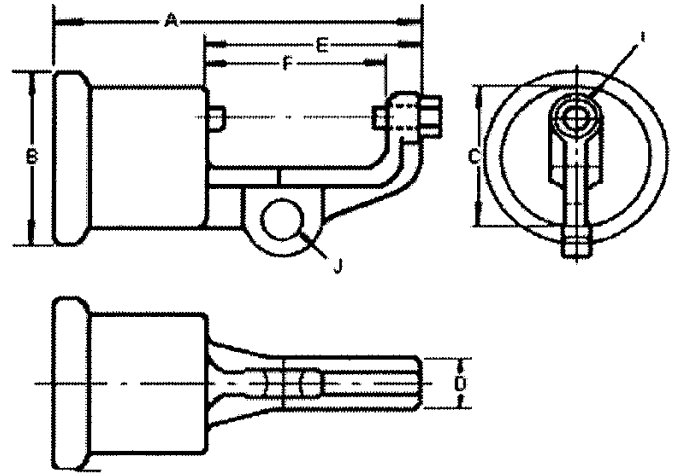
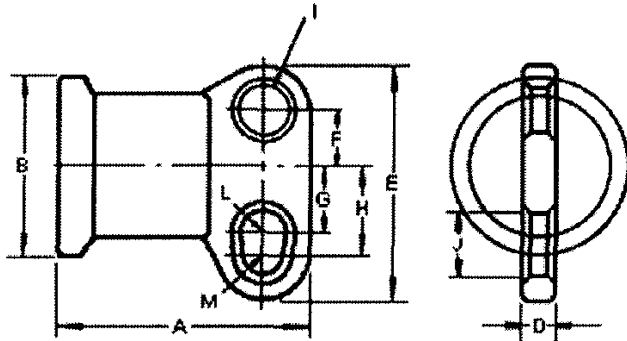
AI & Steel Flat

Horizontal & Vertical Bases DIMENSIONS(in mm)

| Type | A | B | C | D | E | F | G | H | I | J | K |
|-------------------|-------|-------|-------|-------|-------|-------|------|-----|-----------|-----------|-------|
| Unitary D.I.Gain | 304.8 | 355.6 | 44.4 | 204.7 | - | 89.9 | 12.7 | 12° | 23.9 | 23.9X33.3 | 48.3 |
| Unitary D.I. Flat | 254 | 309.9 | 203.2 | 254 | 127 | - | 20.3 | 12° | 23.9 | - | - |
| 5" B.C. | 120.6 | 158.8 | 92.2 | 22.9 | 127 | - | - | - | 17.5 | - | - |
| 5" B.C. | 120.6 | 158.8 | 92.2 | 22.9 | 127 | - | - | - | 5/8-11UFS | - | - |
| AI Gain | 304.8 | 355.6 | - | 204.7 | 155.7 | 141.2 | 12.7 | 12° | 23.9 | 23.9X33.3 | - |
| AL Gain | 304.8 | 355.6 | - | 204.7 | 155.7 | 141.2 | 12.7 | 12° | 20.6 | 23.9X33.3 | - |
| Steel Gain | 304.8 | 355.6 | 203.2 | 254 | 165.1 | 101.6 | 12.7 | 12° | 23.9 | 23.9X33.3 | - |
| AL Flat | 254 | 304.8 | 203.2 | 254 | 127 | 101.6 | 12.7 | 12° | 23.9 | - | - |
| AL Flat | 254 | 304.8 | 203.2 | 254 | 127 | 101.6 | 12.7 | 12° | 20.6 | - | - |
| Steel Flat | 330.2 | 381 | 203.2 | 254 | 165.1 | 101.6 | 12.7 | 12° | 28.6X23.9 | 23.9X50.8 | 304.8 |
| AI Flat | 330.2 | 381 | 203.2 | 254 | 165.1 | 101.6 | 12.7 | 12° | 23.9 | 23.9X33.3 | 304.8 |
| AI Flat | 330.2 | 381 | 203.2 | 254 | 165.1 | 101.6 | 12.7 | 12° | 20.6 | 20.6X33.3 | 304.8 |

COMPOSITE LINE POST INSULATORS

63.5mm Rod Diameter Line Fittings

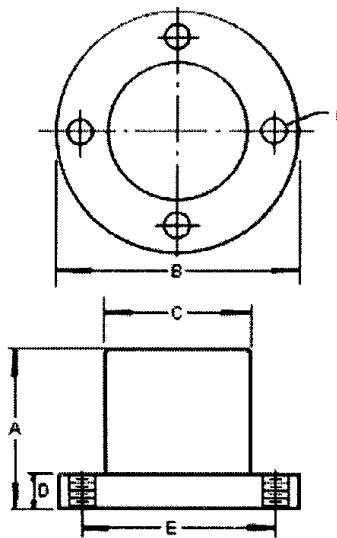


| | |
|--|------------------|
| Transverse compressing Swing Angle For Conductor Suspension Clamp | |
| 2 Hole Blade(Std.) | 2Hole Long Blade |
| 40deg.max. | 64deg.max. |

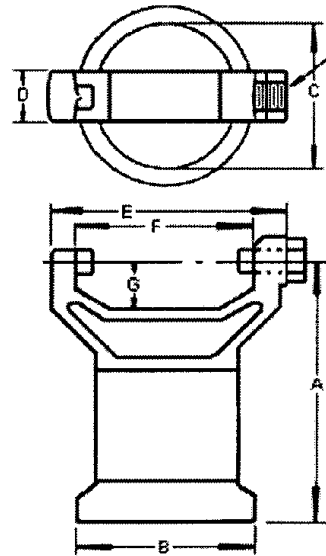
Two Hole Blade

*12° upsweep post angles

Horizontal Clamptop



127mm Bolt Circle



Vertical Clamptop

Horizontal & Vertical End Fittings Dimensions(in mm)

| Type | A | B | C | D | E | F | G | H | I | J | L | M |
|-------------------|-------|-------|------|------|-------|-------|-------|-------|-----------|------|------|------|
| 2 Hole Blade | 145.5 | 101.6 | - | 19.0 | 133.4 | 31.8 | 38.1 | 50.8 | 25.4 | 36.6 | 12.7 | 11.2 |
| 2 Hole Long Blade | 145.5 | 101.6 | - | 19.0 | 196.8 | 31.8 | 101.6 | 114.3 | 25.4 | 36.6 | 12.7 | 11.2 |
| H.Clamptop | 209.3 | 101.6 | 83.8 | 28.4 | 119.9 | 101.6 | - | - | 5/8-11UFS | 19.0 | - | - |
| 5B.C. | 120.6 | 158.8 | 92.2 | 22.9 | 127 | - | - | - | 5/8-11UFS | - | - | - |
| 5" B.C/ | 120.6 | 158.8 | 92.2 | 22.9 | 127 | - | - | - | 18xHoles | - | - | - |
| V.Clamptop | 149.4 | 101.6 | 83.8 | 28.4 | 136.4 | 101.6 | 26.9 | - | 5/8-11UFS | - | - | - |